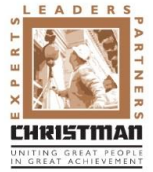




UNDER CONSTRUCTION

Ludington Area Schools MSHS Additions and Renovations



Project Duration is 27% Complete



HS Classroom



HS Data / Electrical Room



HS Classroom Exterior

WORK IN PROGRESS

This Month

- Complete MEP rough ins
- Install ceilings in MS classrooms
- Install curtainwall on HS office
- Paint drywall in HS office
- Begin mass demolition
- Prep bus loop and remainder of south end of site

Next Month

- Install MS classroom addition casework
- Install new windows for HS gym
- Complete asbestos abatement
- Begin phase 2 demolition

PROJECT MANAGEMENT UPDATE

Safety

- This month's Safety Goal focuses on working safely from elevated work areas

Schedule

- The project is on schedule

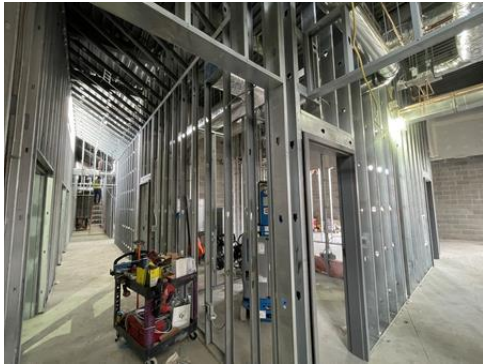
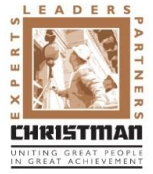
Other Progress

- Oriole field turf project on schedule
- Team Room bidding out on June 18



UNDER CONSTRUCTION

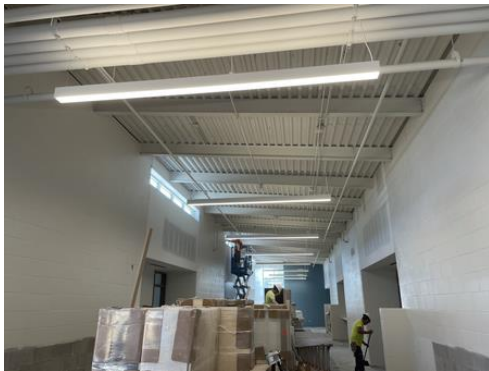
Ludington Area Schools MSHS Additions and Renovations



HS Office Framing



HS Office Drywall



HS Classroom Hallway



MS Ramp / Stairs



HS Staff Lot Water Detention System



Prepping for Staff Lot